

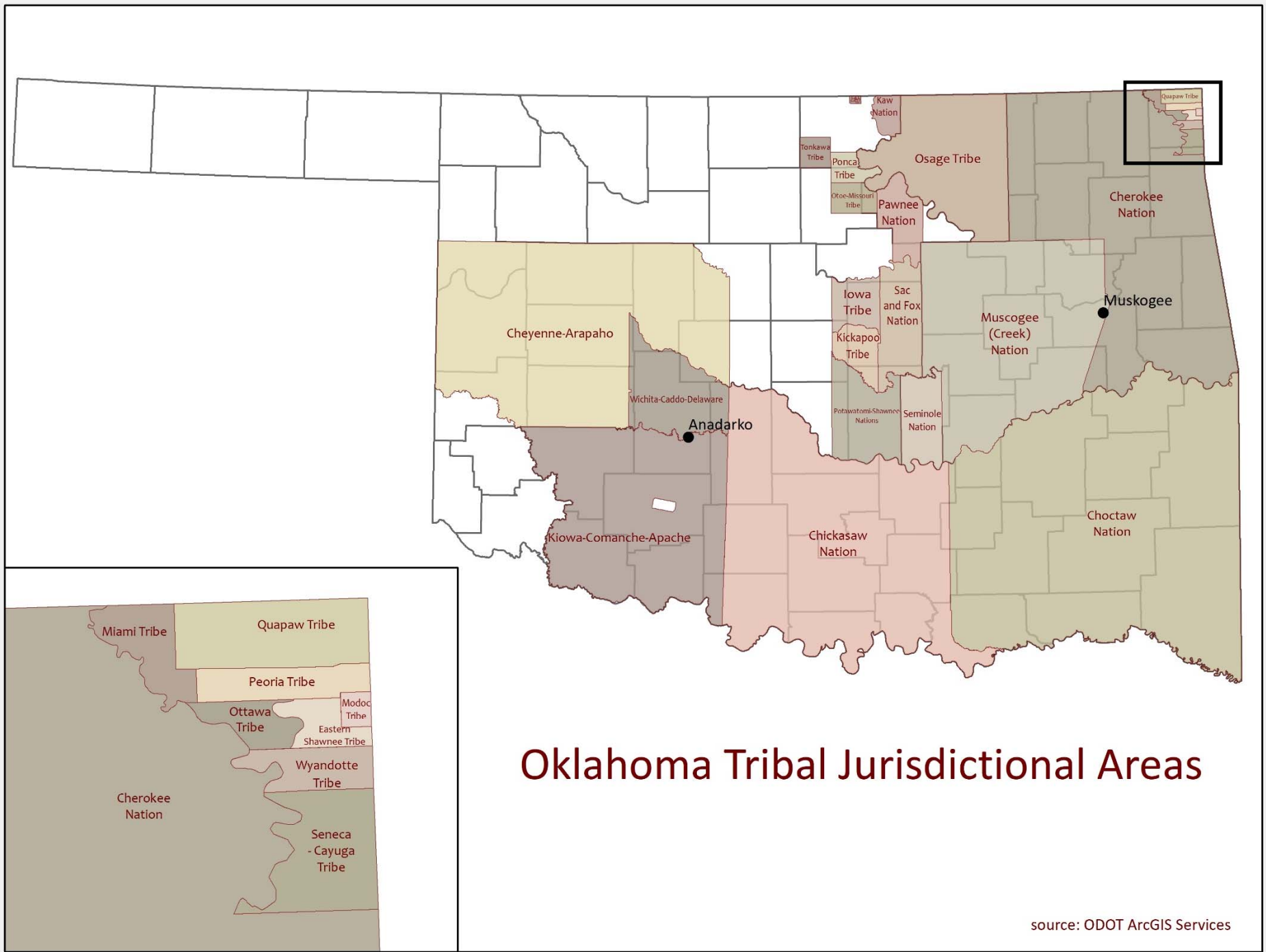
TRIBAL
TRANSPORTATION
in Oklahoma

OKLAHOMA GEOGRAPHIC COUNCIL

November 1, 2019

Tribes in Oklahoma

- 38 Federally Recognized Tribes
- \$12.9 billion economic impact (2017)
- 2 BIA Regions
 - Eastern Oklahoma (Muskogee)
 - Southern Plains (Anadarko)
- Tribal Jurisdictional Areas
 - Checkerboard trust lands
 - Road Network



Oklahoma Tribal Jurisdictional Areas

source: ODOT ArcGIS Services

Tribal Transportation Program

- TTP – largest program in the Office of Federal Lands Highway
- TTP Regulations – 25 CFR 170
- Sections:
 - Planning
 - Environment
 - Safety
 - Bridge

Federal Undertaking

- Funding administered by
 - BIA
 - FHWA
- Federal undertaking triggers
 - NEPA – National Environmental Policy Act
 - NHPA – National Historic Preservation Act

NTTFI

- National Tribal Transportation Facility Inventory
 - Formerly known as Indian Reservation Roads program
 - Design, environmental, construction, maintenance
- Transportation Facility
 - Roadways, parking lots, etc.
 - Falls within or provides access to Indian lands
- Oklahoma Tribal Collaboration
 - Cities, Counties, ODOT (tribal liaison – Dr. Rhonda Fair)
 - BIA, FHWA, SHPO, USFWS, USACE

CTC TTP Projects

- CPN Rainbow Arch Bridge
- MCN Eufaula Walking Trail
- MCN K Bar Road

CPN Rainbow Arch Bridge



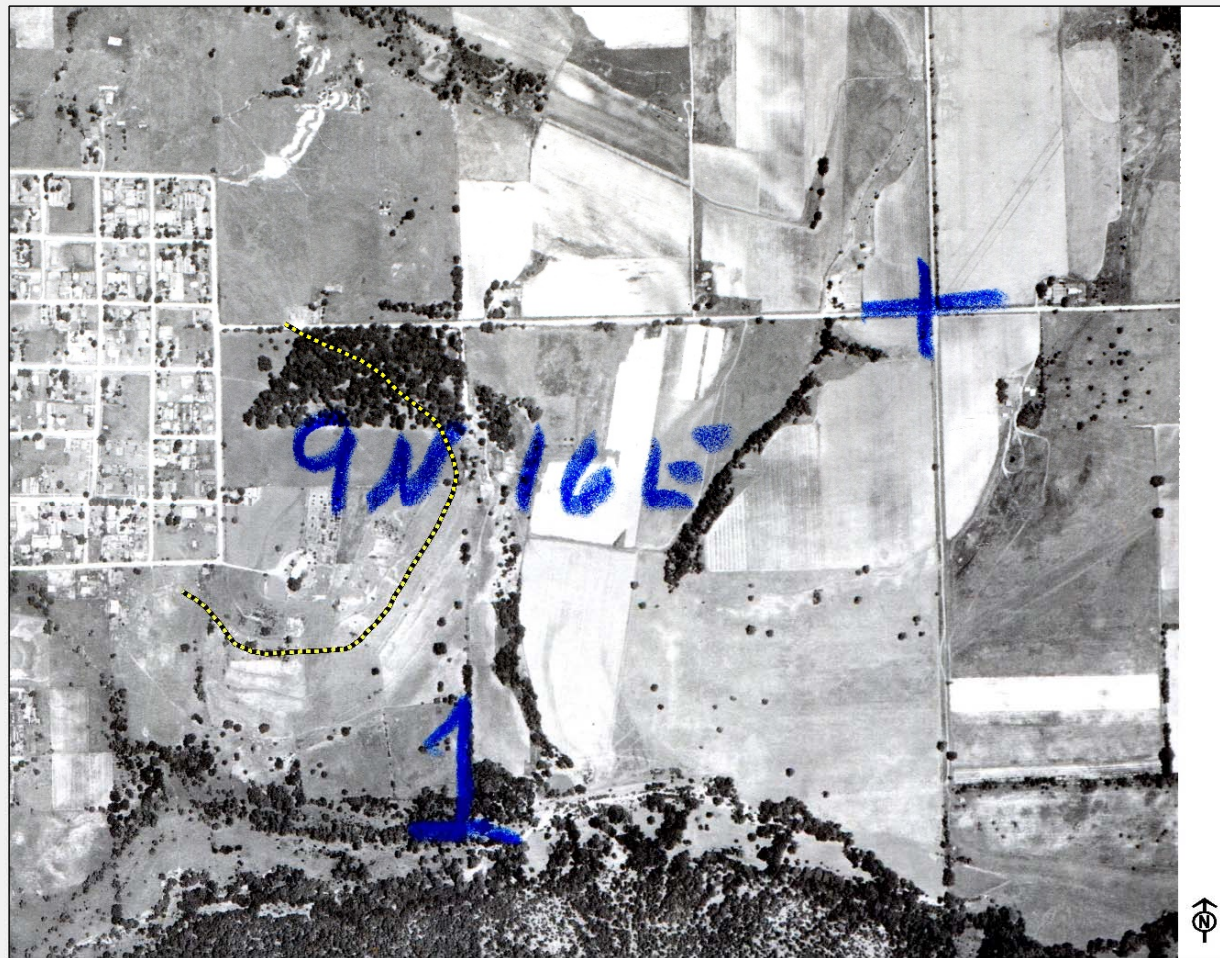
<https://www.potawatomi.org/tribe-begins-rehabilitation-on-one-of-pottawatomie-county-s-oldest-bridges/>



MCN Eufaula Walking Trail

1956

MCN wants
on USACE

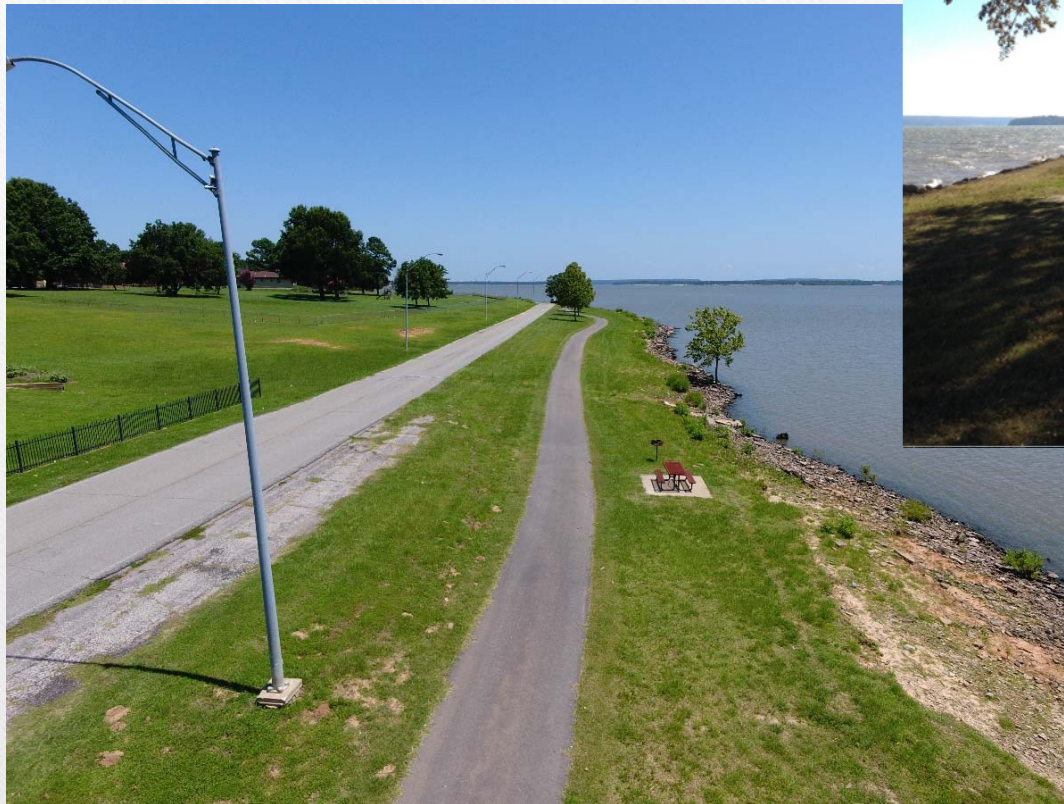


USGS Eufaula Quadrangle

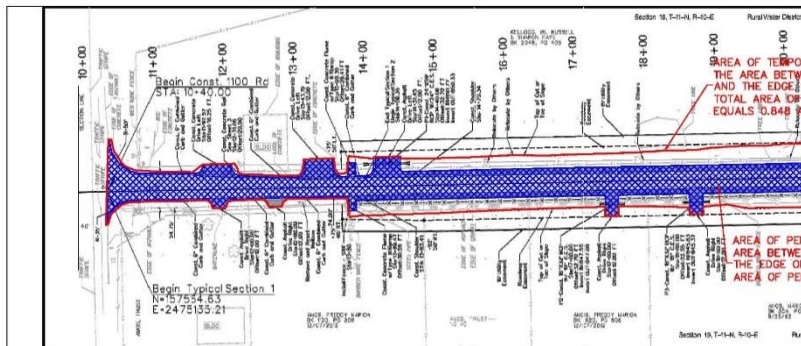
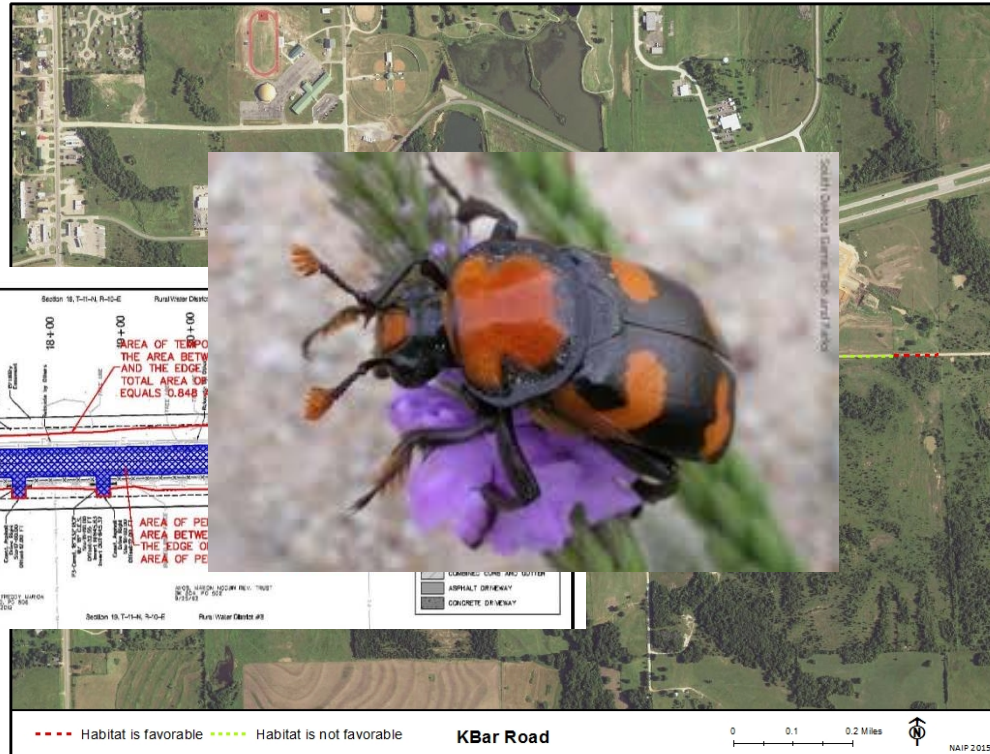
0 500 1,000 Feet

Trail
.....
Nation
:0
klahoma
16E

MCN Eufaula Walking Trail



MCN K Bar Road

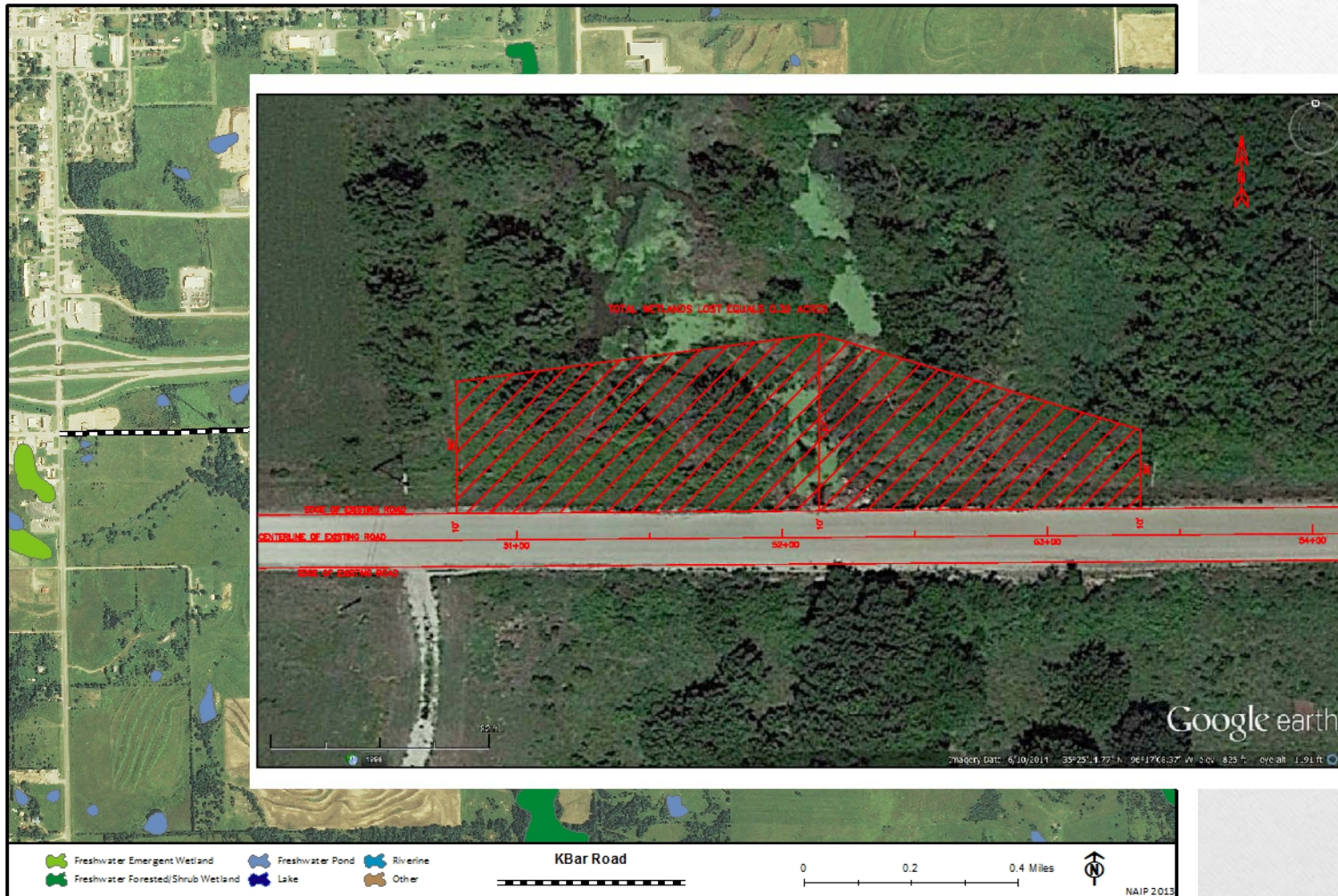


	Likely to Adversely Affect		Not likely to Adversely Affect
Sheet #	Temporary Disturbance (acres)	Permanent Loss (acres)	Unfavorable habitat (acres)
1 (17 of 127)	0.848	0.568	0.150
2 (18 of 127)	0.558	0.662	0.404
3 (19 of 127)	0.612	0.546	0.728
4 (20 of 127)	1.165	0.608	0.084
5 (21 of 127)	0.606	0.569	0.609
6 (22 of 127)	0.757	0.579	0.403
7 (23 of 127)	0.077	0.021	0.000
Total	4.623	3.553	2.378

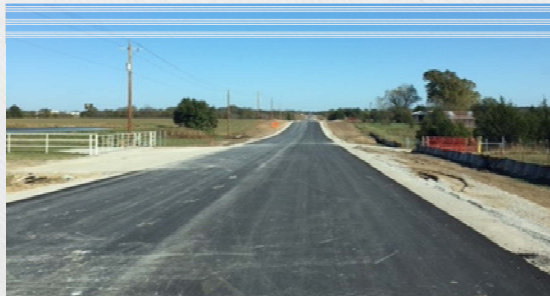
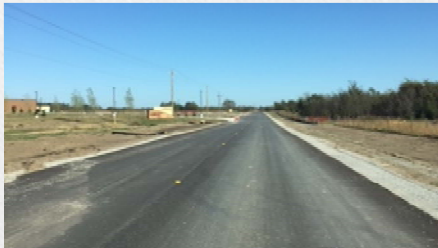
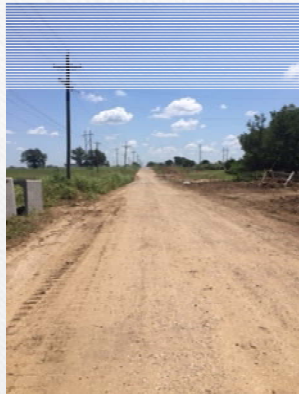
Based on the results of the Biological Assessment, it is estimated that 4.623 acres of temporary disturbance will occur and must therefore be mitigated at a 1:0.5 ratio. The permanent loss is estimated at 3.553 acres and must therefore be mitigated at a 1:2 ratio.

9.4 Conservation Credits = \$141, 000

MCN K Bar Road



MCN K Bar Road



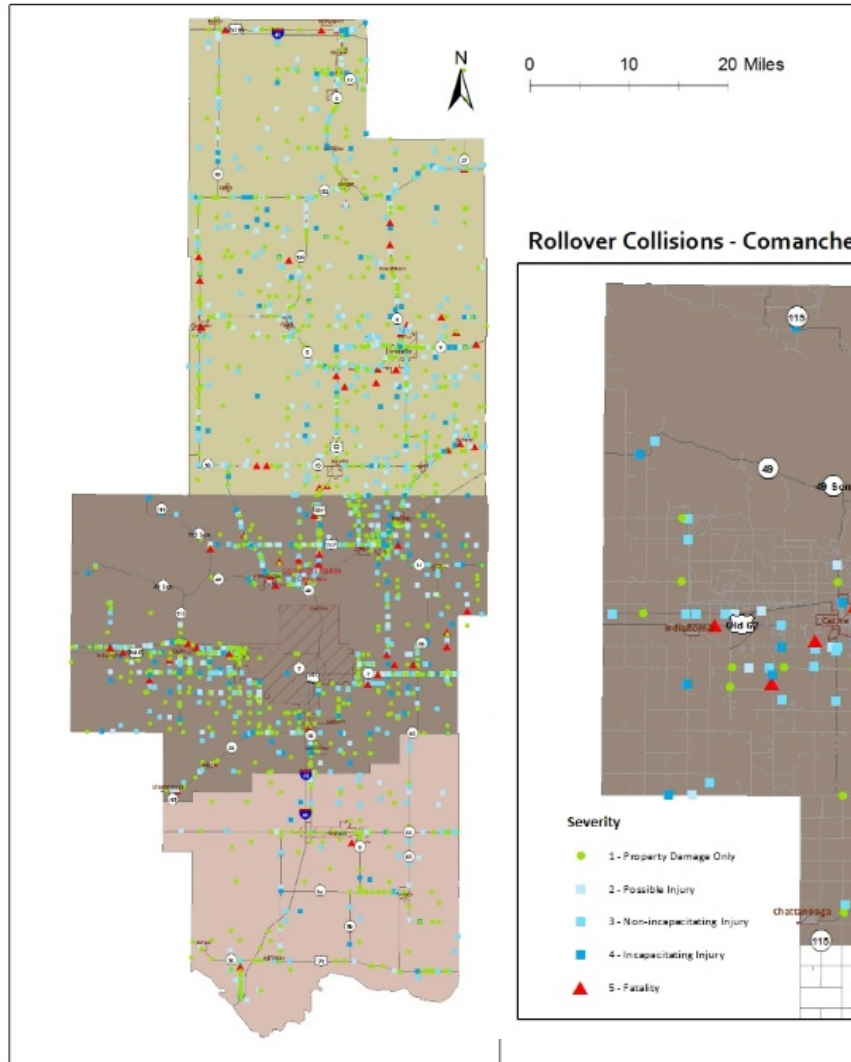
Okemah Creek
Nation
Community
Hospital

Used with permission of
Mvskokemedia

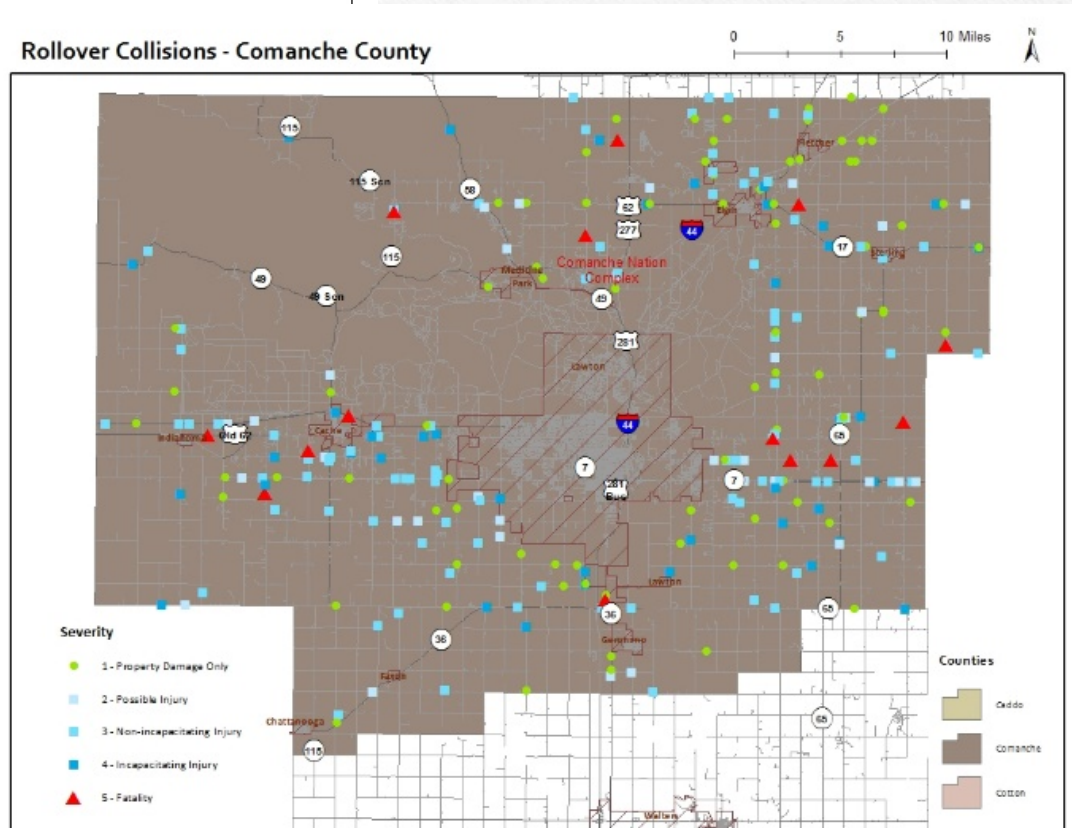


Hospital officially opened in May 2018.

Comanche Nation Study Collisions



Rollover Collisions - Comanche County



Tribal Transportation Safety

- TTPSF Projects
 - [Cherokee Nation](#)
 - Muscogee (Creek) Nation
 - Mission Street Intersection: [Before](#) & [After](#)
 - [Citizen Potawatomi Nation](#)
 - [Pawnee Nation](#)



Special Projects

- Osage Nation Heritage Trail Scenic Byway
 - <https://www.osagenation-nsn.gov/news-events/news/osage-nation-heritage-trail-scenic-byway-ribbon-cutting>
- Premiere Steel Bridges
 - Fast Cast Bridge fills a need in rural areas for a lightweight long-lasting, cost-effective steel structure that can be installed quickly and filled with concrete in place.
 - Meets AASHTO HL-93 loading standards



Upcoming Tribal Matters

- Federal Transportation
 - Tribal Transportation Self-Governance Program
 - Tribal Transportation Funding Formula
- Oklahoma
 - Sharp v. Murphy Case (formerly Carpenter v. Murphy)
 - Oklahoma Gaming Compact

Contact Information

- Pamela Journey, GISP
 - Project Manager, Cross Timbers Consulting
 - 405-255-6999
 - pamela.journey@crostimbersconsulting.com
 - www.crostimbersconsulting.com